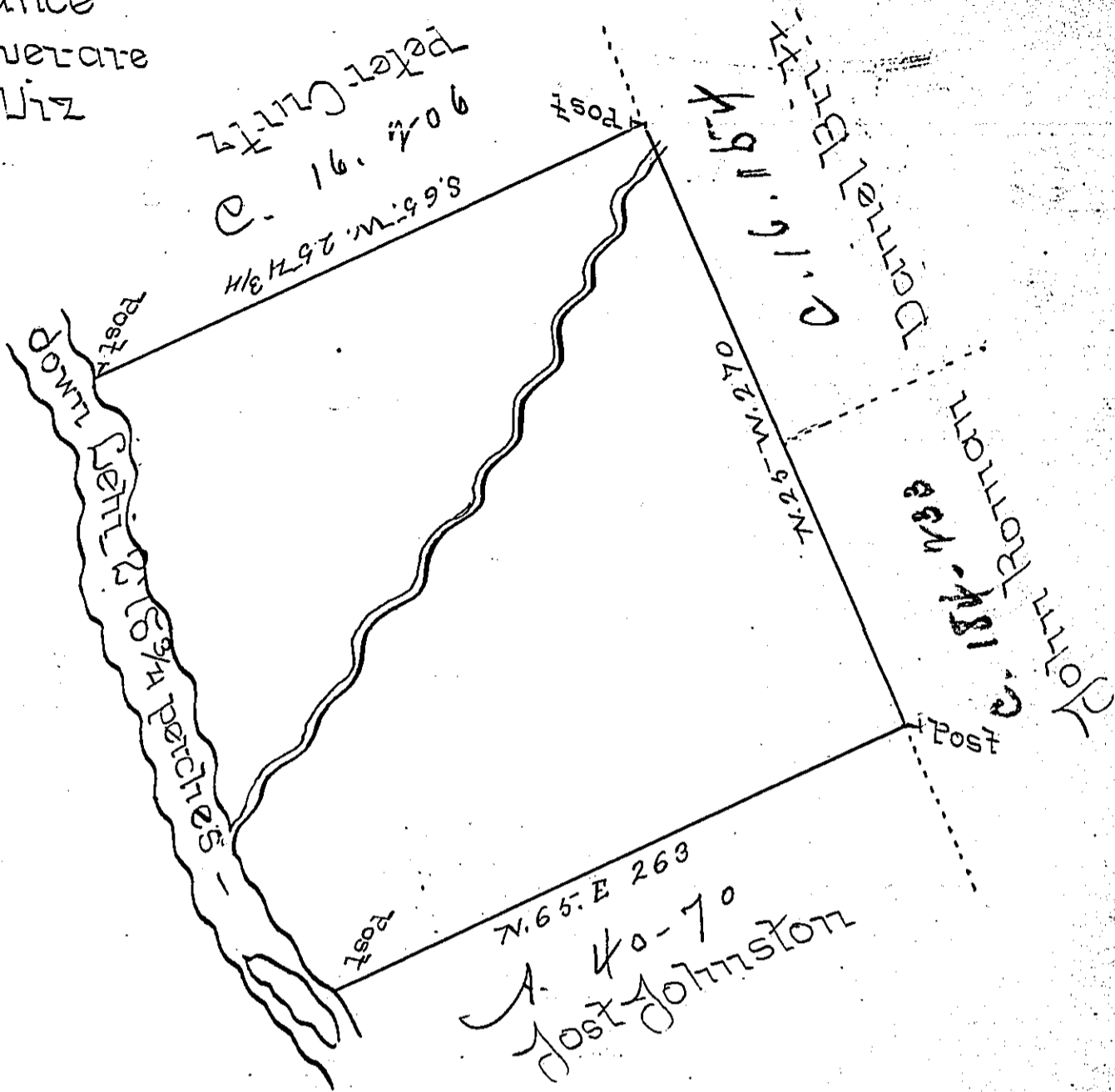


Bearing & distance  
down Bethi River are  
as followeth Viz

- S 15° E 8 1/2
- S 8 25-
- S 10 W 33 1/4
- S 30° E 80
- S 17° E 78
- S 32° E 67 5/4
- 278 9/4



By virtue of a Warrant dated the 30 December 1754  
Surveyed the 3<sup>d</sup> April 1793 to Post Johnston the above  
described Situate in the pine Swamp on the East side  
of Bethi in the County of Northampton Containing  
four hundred and six ten Acres eighty seven perches  
and the allowance of six Pent &c<sup>a</sup>

Pres. Palmer D.S.

To Daniel Brodhead Esq: }  
Surveyor General -- }

IN TESTIMONY that the above is a copy of the original remaining on file in  
the Department of Internal Affairs of Pennsylvania, made  
conformably to an Act of Assembly approved the 16th day of  
February, 1833, I have hereunto set my Hand and caused  
the Seal of said Department to be affixed at Harrisburg,  
this first day of November 1898.

*James W. Latta*  
Secretary of Internal Affairs.